



NATA LIGHTING CO.,LTD.  
www.nata.cn  
Email:info@nata.com  
Tel:+86-750-3770000 Fax:+86-750-3771111  
Address:380JinOu Road,GaoXin Zone,Jiang Men City,Guangdong,China

NT

Client: NT

LumCAT: 62-0087

Luminaire: 92.70.429.00

Report No: 2024831-B003

Ballast type: AC

Test No: 2024831-C003

Voltage(V): 34.300

LampCAT: CREE CXA1820 LES12

Current(A): 0.361

Lamp flux(lm): 2138.9

Power (W): 12.382

Number of Lamps: 1

PF: 0.000

Length(mm): 62

Width(mm): 62

Phm Type: C

Height(mm): 32

### Photometric Results

Lumens(lm): 2042.43, Efficiency(%): 95.49% , Luminous Efficacy(lm/W): 164.95

Central intensity(cd): 4837.675, Maximum intensity(cd): 4837.675

Angle of maximum intensity: C=0.0  $\gamma$ =0.0

Beam Angle(50%Imax): [C0/180]Total=36.4

[C90/270]Total=36.4

Field angle(10%Imax): [C0/180]Total=57.6

[C90/270]Total=57.6

Maximum s/h(1/2): C0\_180=0.60 C90\_270=0.60

Maximum s/h(1/4): C0\_180=0.56 C90\_270=0.56

Up flux rate of lamp(%): 0.00%

Down flux rate of lamp(%): 95.49%

Up flux rate of LUM(%): - -

Down flux rate of LUM(%): 100.00%

CIE Type : Direct lighting

Output flux ratio in  $\pi$  solid angle : 95.371%

Equipment: GMS1980  
Temperature(°C): 25.0

Date: 2024/8/31  
Humidity(%): 60.0%

Operator: NT07  
Distance(m): 7.65

$\gamma(^{\circ})$	Average I(cd)	Zonal F(lm)	Sum F(lm)	Eff Flux(%)	Eff Sum(%)
0.0	4837.675	0.000	0	0.00%	0.00%
1.0	4829.408	4.626	4.626	0.22%	0.23%
2.0	4810.023	13.835	18.461	0.65%	0.90%
3.0	4783.615	22.945	41.406	1.07%	2.03%
4.0	4736.211	31.866	73.272	1.49%	3.59%
5.0	4680.176	40.509	113.78	1.89%	5.57%
6.0	4607.828	48.811	162.591	2.28%	7.96%
7.0	4523.555	56.678	219.27	2.65%	10.74%
8.0	4428.383	64.067	283.337	3.00%	13.87%
9.0	4306.364	70.790	354.127	3.31%	17.34%
10.0	4167.519	76.686	430.813	3.59%	21.09%
11.0	4012.507	81.735	512.548	3.82%	25.10%
12.0	3837.159	85.808	598.356	4.01%	29.30%
13.0	3637.598	88.707	687.063	4.15%	33.64%
14.0	3413.530	90.254	777.317	4.22%	38.06%
15.0	3194.875	90.723	868.04	4.24%	42.50%
16.0	2961.443	90.207	958.247	4.22%	46.92%
17.0	2712.503	88.359	1046.606	4.13%	51.24%
18.0	2467.660	85.410	1132.015	3.99%	55.42%
19.0	2236.496	81.843	1213.858	3.83%	59.43%
20.0	1986.532	77.293	1291.151	3.61%	63.22%
21.0	1771.242	72.157	1363.308	3.37%	66.75%
22.0	1420.370	64.137	1427.445	3.00%	69.89%
23.0	1324.320	57.591	1485.036	2.69%	72.71%
24.0	1170.362	54.543	1539.579	2.55%	75.38%
25.0	1000.325	49.357	1588.935	2.31%	77.80%
26.0	843.770	43.530	1632.465	2.04%	79.93%
27.0	697.508	37.708	1670.173	1.76%	81.77%
28.0	571.582	32.131	1702.304	1.50%	83.35%
29.0	464.778	27.114	1729.418	1.27%	84.67%
30.0	372.086	22.595	1752.013	1.06%	85.78%
31.0	298.011	18.648	1770.661	0.87%	86.69%
32.0	252.195	15.763	1786.424	0.74%	87.47%
33.0	223.680	14.019	1800.443	0.66%	88.15%
34.0	156.453	11.504	1811.947	0.54%	88.72%
35.0	131.749	8.950	1820.898	0.42%	89.15%
36.0	113.526	7.810	1828.707	0.37%	89.54%
37.0	99.269	6.940	1835.647	0.32%	89.88%

$\gamma(^{\circ})$	Average I(cd)	Zonal F(lm)	Sum F(lm)	Eff Flux(%)	Eff Sum(%)
38.0	88.910	6.281	1841.928	0.29%	90.18%
39.0	81.405	5.813	1847.742	0.27%	90.47%
40.0	75.677	5.478	1853.22	0.26%	90.74%
41.0	71.134	5.228	1858.448	0.24%	90.99%
42.0	67.557	5.039	1863.487	0.24%	91.24%
43.0	64.901	4.907	1868.394	0.23%	91.48%
44.0	62.692	4.816	1873.209	0.23%	91.71%
45.0	61.039	4.755	1877.965	0.22%	91.95%
46.0	59.890	4.729	1882.694	0.22%	92.18%
47.0	59.049	4.731	1887.424	0.22%	92.41%
48.0	58.537	4.753	1892.178	0.22%	92.64%
49.0	58.193	4.794	1896.971	0.22%	92.88%
50.0	57.776	4.835	1901.807	0.23%	93.11%
51.0	57.228	4.866	1906.672	0.23%	93.35%
52.0	56.233	4.869	1911.541	0.23%	93.59%
53.0	54.755	4.828	1916.369	0.23%	93.83%
54.0	53.051	4.752	1921.121	0.22%	94.06%
55.0	51.361	4.661	1925.781	0.22%	94.29%
56.0	49.810	4.572	1930.353	0.21%	94.51%
57.0	48.471	4.494	1934.847	0.21%	94.73%
58.0	47.125	4.421	1939.267	0.21%	94.95%
59.0	45.860	4.347	1943.614	0.20%	95.16%
60.0	44.689	4.278	1947.892	0.20%	95.37%
61.0	43.460	4.207	1952.099	0.20%	95.58%
62.0	42.348	4.135	1956.234	0.19%	95.78%
63.0	41.075	4.057	1960.291	0.19%	95.98%
64.0	39.993	3.978	1964.269	0.19%	96.17%
65.0	38.837	3.901	1968.17	0.18%	96.36%
66.0	37.710	3.819	1971.989	0.18%	96.55%
67.0	36.613	3.737	1975.727	0.17%	96.73%
68.0	35.479	3.652	1979.379	0.17%	96.91%
69.0	34.448	3.567	1982.946	0.17%	97.09%
70.0	33.387	3.484	1986.43	0.16%	97.26%
71.0	32.378	3.399	1989.829	0.16%	97.42%
72.0	31.383	3.315	1993.144	0.16%	97.59%
73.0	30.483	3.235	1996.379	0.15%	97.75%
74.0	29.678	3.163	1999.542	0.15%	97.90%
75.0	28.998	3.100	2002.642	0.14%	98.05%

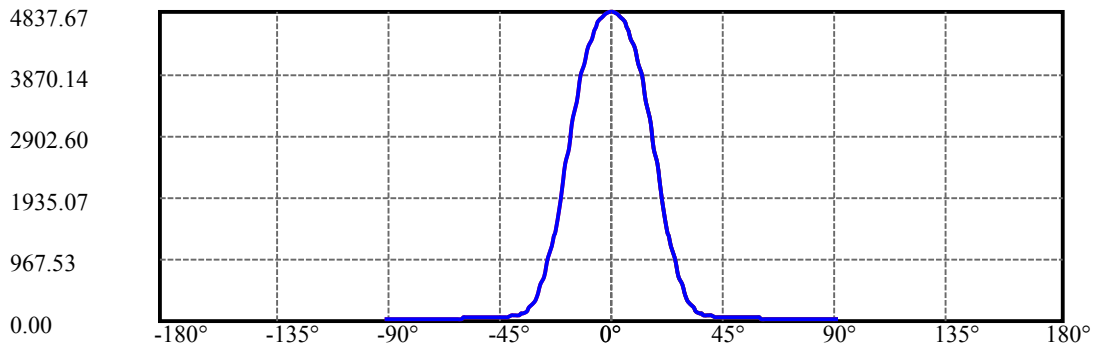
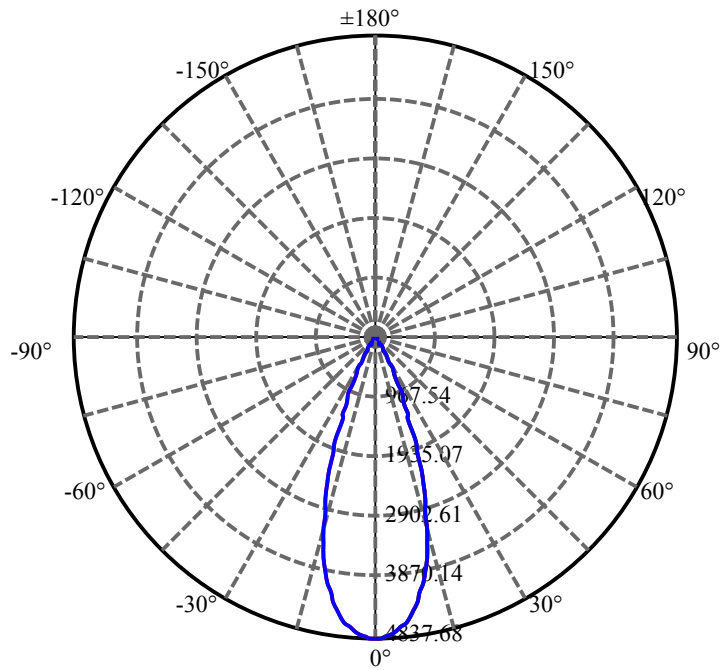
$\gamma(^{\circ})$	Average I(cd)	Zonal F(lm)	Sum F(lm)	Eff Flux(%)	Eff Sum(%)
76.0	28.383	3.046	2005.688	0.14%	98.20%
77.0	27.791	2.995	2008.683	0.14%	98.35%
78.0	27.242	2.946	2011.629	0.14%	98.49%
79.0	26.679	2.897	2014.526	0.14%	98.63%
80.0	26.182	2.850	2017.376	0.13%	98.77%
81.0	25.772	2.810	2020.186	0.13%	98.91%
82.0	25.435	2.777	2022.963	0.13%	99.05%
83.0	25.084	2.746	2025.709	0.13%	99.18%
84.0	24.572	2.705	2028.414	0.13%	99.31%
85.0	23.702	2.635	2031.049	0.12%	99.44%
86.0	22.677	2.535	2033.584	0.12%	99.57%
87.0	21.602	2.423	2036.007	0.11%	99.69%
88.0	20.285	2.295	2038.302	0.11%	99.80%
89.0	18.793	2.142	2040.444	0.10%	99.90%
90.0	17.462	1.988	2042.432	0.09%	100.00%

ZONAL LUMEN SUMMARY

Zone	Lumens	%Lamp	%Fixt
0-30	1752.01	81.91%	85.78%
0-40	1853.22	86.64%	90.74%
0-60	1947.89	91.07%	95.37%
0-90	2040.44	95.40%	99.90%
0-120	2040.44	95.40%	99.90%
0-180	2042.43	95.49%	100.00%
60-90	92.55	4.33%	4.53%
90-120	0.00	0.00%	0.00%
90-130	0.00	0.00%	0.00%
90-150	0.00	0.00%	0.00%
90-180	0.00	0.00%	0.00%
0-26.04	1633.95	76.39%	80.00%

ZONAL LUMEN SUMMARY

0-10	430.81
10-20	860.34
20-30	460.86
30-40	101.21
40-50	48.59
50-60	46.09
60-70	38.54
70-80	30.95
80-90	23.07
90-100	0.00
100-110	0.00
110-120	0.00
120-130	0.00
130-140	0.00
140-150	0.00
150-160	0.00
160-170	0.00
170-180	0.00



C0(Max): —————

C0/C180: —————

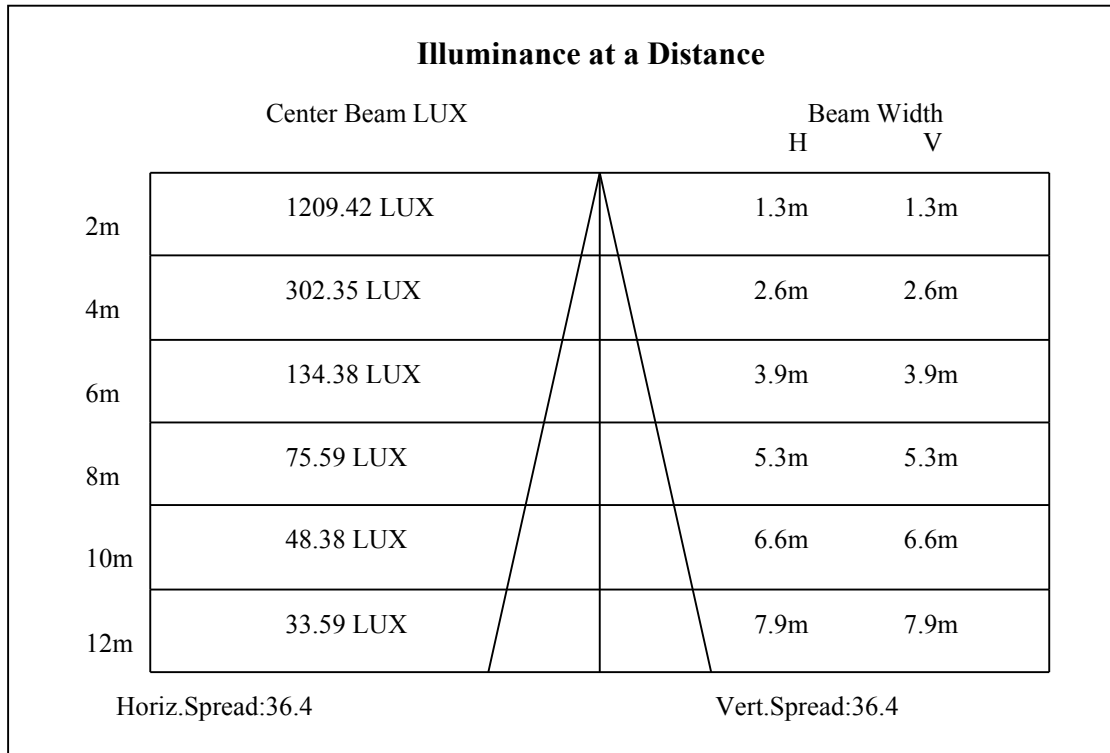
C90/C270: —————

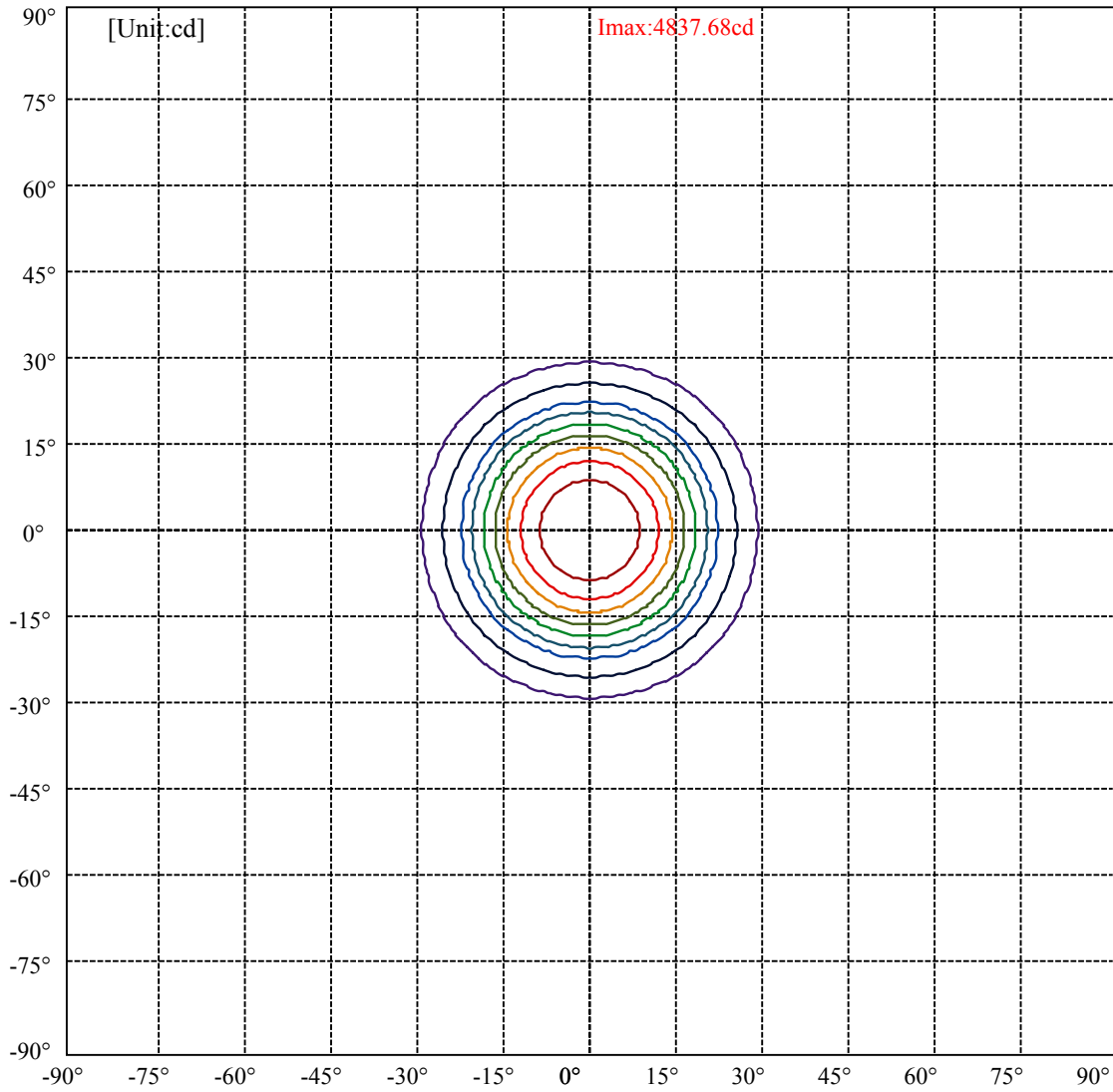
Field angle(10%Imax):C0/180Left:28.8 Right:28.8

:C90/270Left:28.8 Right:28.8

Beam Angle(50%Imax):C0/180Left:18.2 Right:18.2

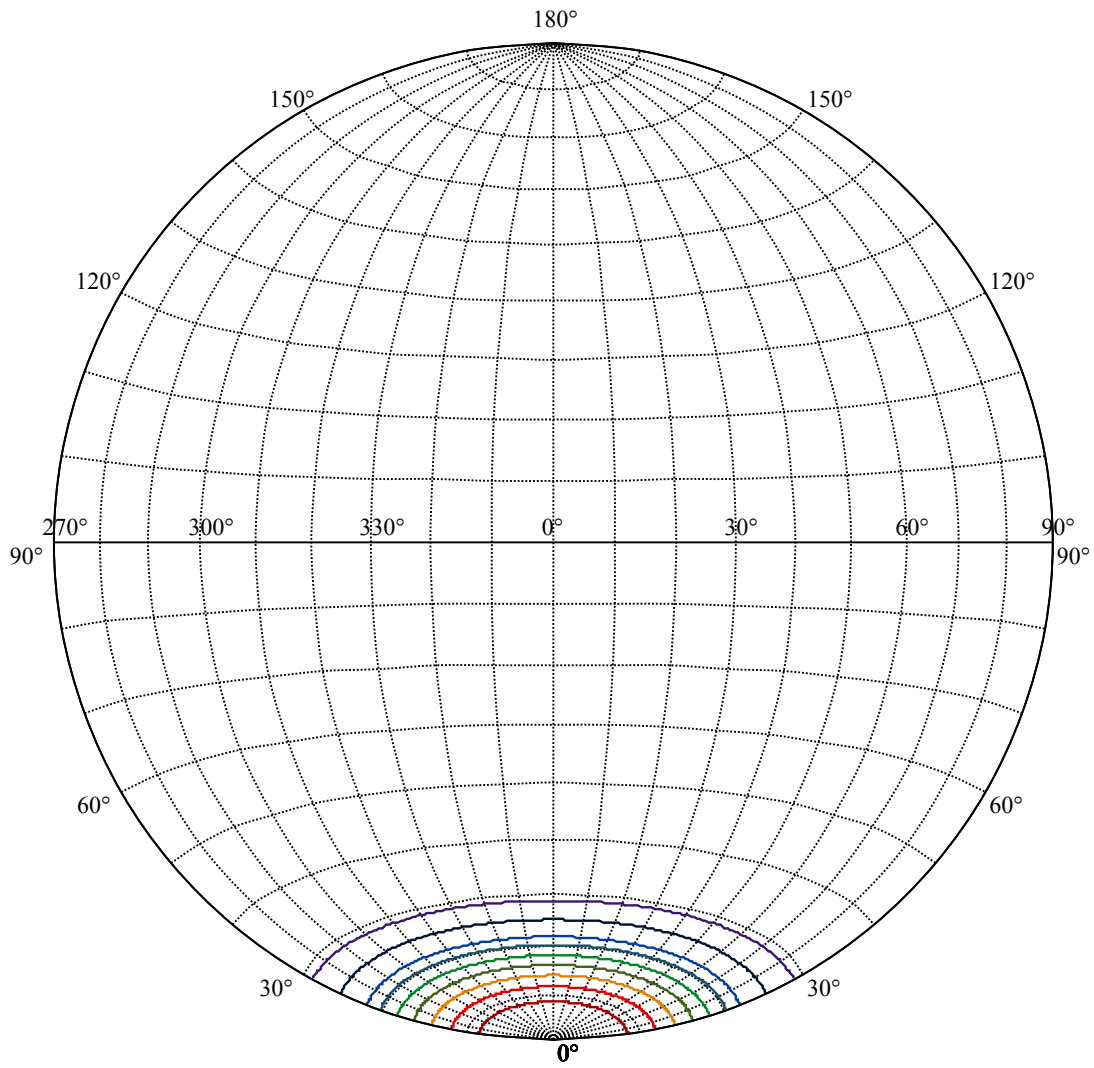
:C90/270Left:18.2 Right:18.2





(10%Imax) 483.767	—
(20%Imax) 967.535	—
(30%Imax) 1451.3	—
(40%Imax) 1935.07	—
(50%Imax) 2418.84	—
(60%Imax) 2902.6	—
(70%Imax) 3386.37	—
(80%Imax) 3870.14	—
(90%Imax) 4353.91	—





House

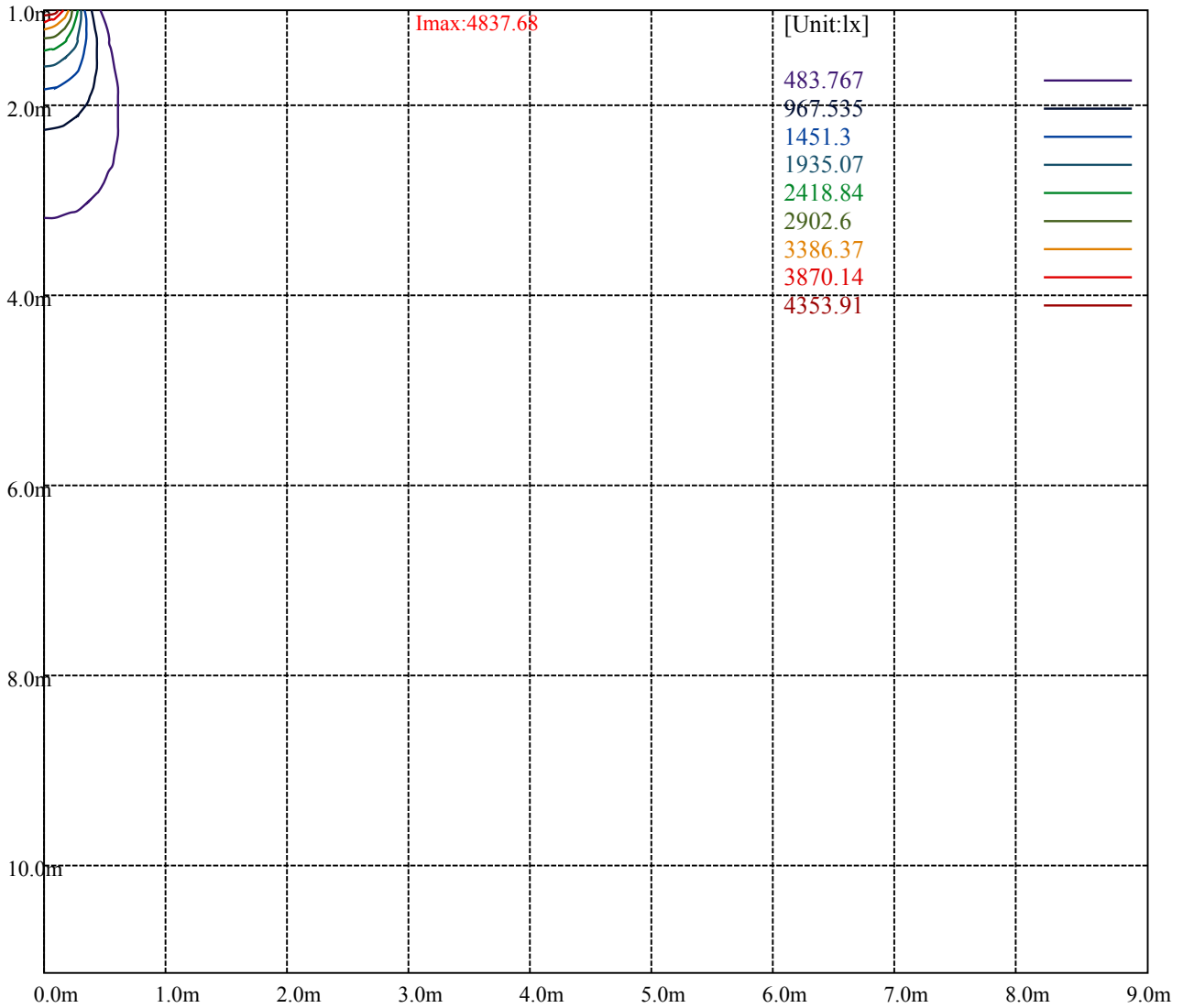
[Unit:cd]

Road

**Imax:4837.68**

(10%Imax) 483.767	—
(20%Imax) 967.535	—
(30%Imax) 1451.3	—
(40%Imax) 1935.07	—
(50%Imax) 2418.84	—
(60%Imax) 2902.6	—
(70%Imax) 3386.37	—
(80%Imax) 3870.14	—
(90%Imax) 4353.91	—





Luminance Table

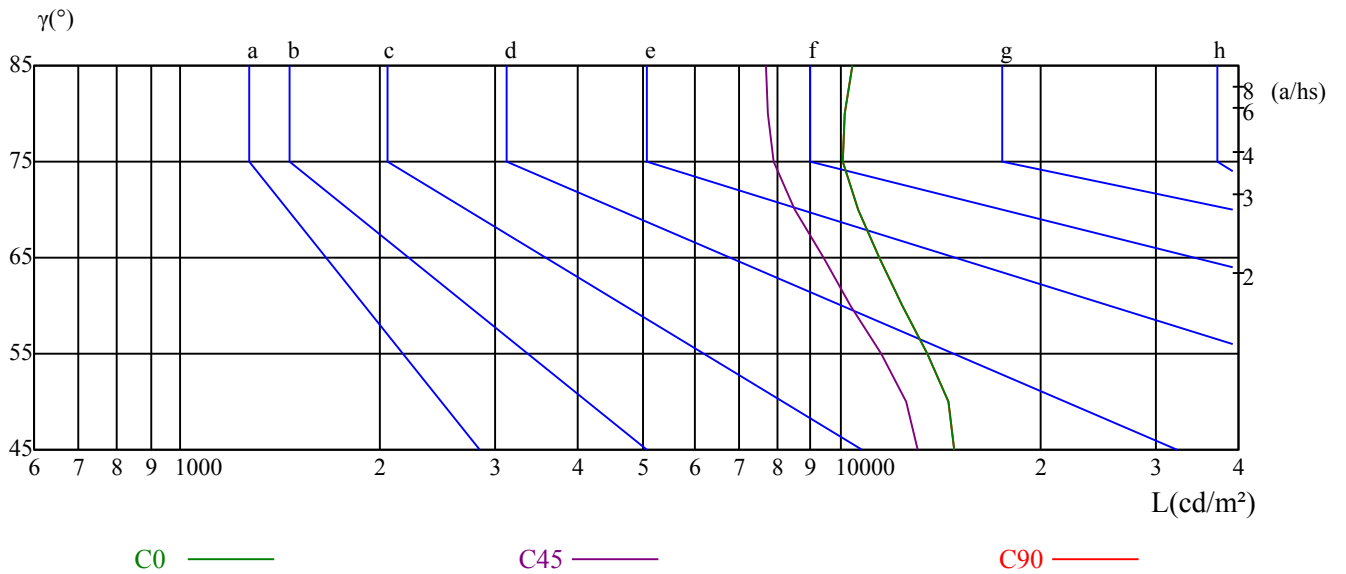
$\gamma$	45	50	55	60	65	70	75	80	85
C0	14891	14564	13500	12368	11441	10599	10064	10105	10393
C45	13067	12597	11497	10359	9409	8539	7917	7729	7679
C90	14891	14564	13500	12368	11441	10599	10064	10105	10393

L(Hor)(65)	L(Ver)(65)	L45(65)	L(Hor)(75)	L(Ver)(75)	L45(75)	L(Hor)(85)	L(Ver)(85)	L45(85)
23906	23906	23906	29147	29147	29147	70745	70745	70745

Glare Table

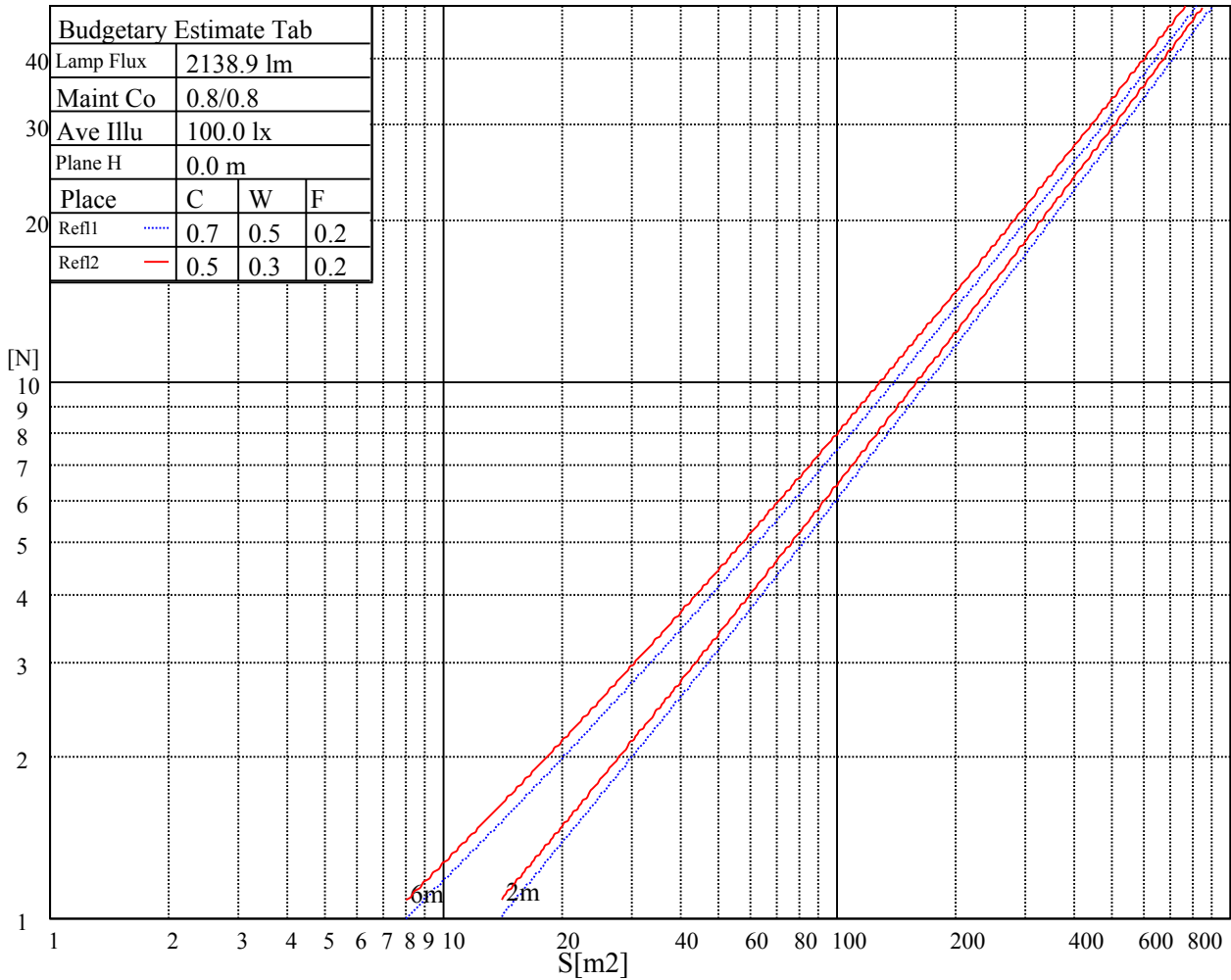
Glare	Quality	Service Values Illuminance(lx)							
1.15	A	2000	1000	500	<=300				
1.5	B		2000	1000	500	<=300			
1.85	C			2000	1000	500	<=300		
2.2	D				2000	1000	500	<=300	
2.55	E					2000	1000	500	<=300
		a	b	c	d	e	f	g	h

Luminance Limiting Curve

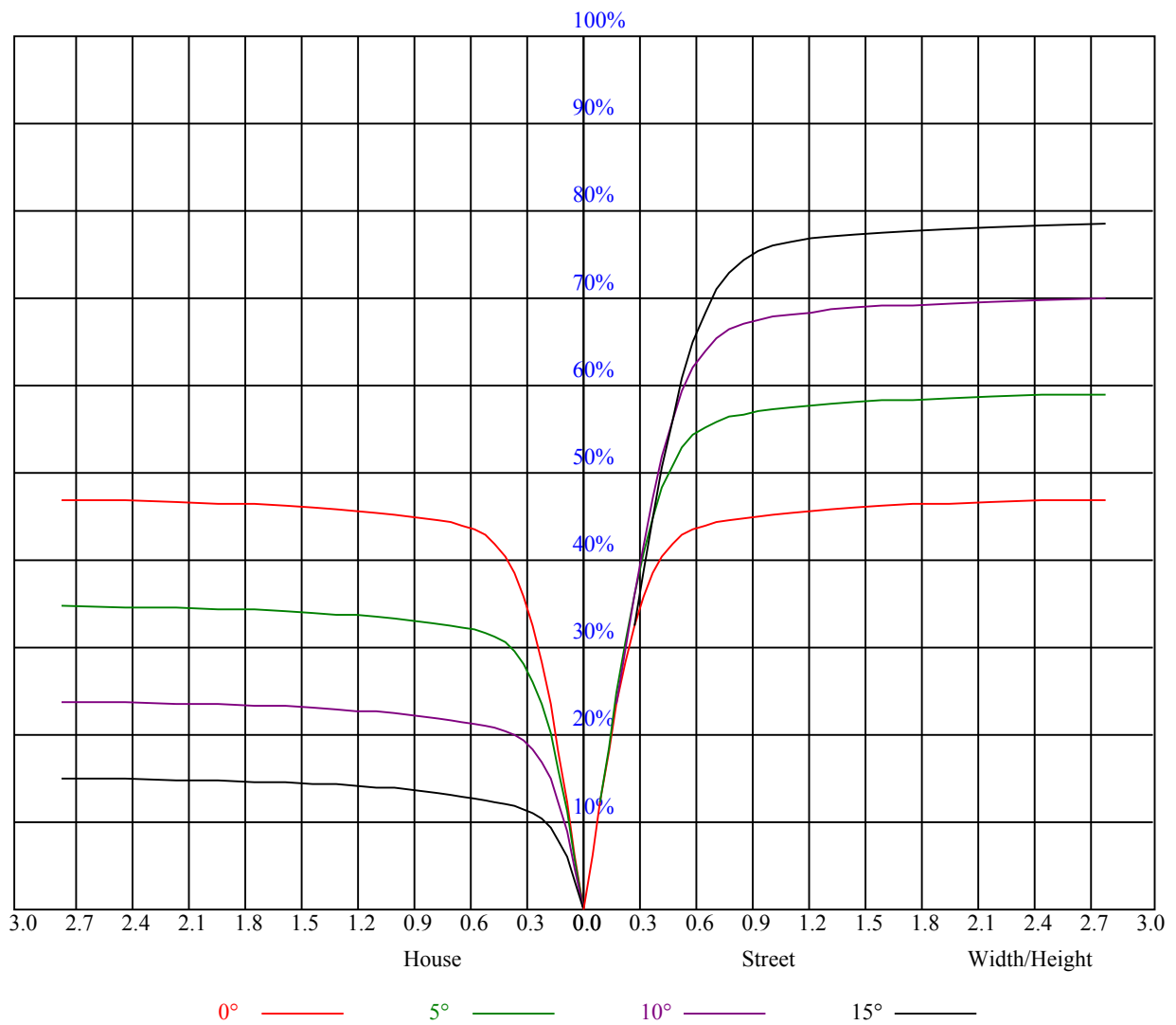


Illumination assessment according UGR											
Rf of Ceiling	70	70	50	50	30	70	70	50	50	30	
Rf of Wall	50	30	50	30	30	50	30	50	30	30	
Rf of Floor	20	20	20	20	20	20	20	20	20	20	
Room dimensions		Viewed crosswise					Viewed endwise				
X	Y										
2H	2H	15.21	16.23	15.57	16.54	16.86	15.16	16.19	15.52	16.50	16.81
	3H	16.87	17.79	17.25	18.12	18.47	16.73	17.65	17.12	17.99	18.33
	4H	17.68	18.54	18.08	18.89	19.26	17.53	18.39	17.93	18.74	19.11
	6H	18.59	19.37	19.01	19.75	20.15	18.43	19.21	18.85	19.59	19.99
	8H	19.05	19.80	19.47	20.18	20.59	18.89	19.64	19.31	20.03	20.43
	12H	19.50	20.22	19.93	20.61	21.03	19.36	20.07	19.78	20.46	20.88
4H	2H	15.76	16.61	16.16	16.97	17.33	15.72	16.58	16.12	16.93	17.30
	3H	17.59	18.32	18.02	18.71	19.13	17.48	18.20	17.90	18.59	19.01
	4H	18.61	19.24	19.05	19.66	20.11	18.48	19.11	18.92	19.53	19.98
	6H	19.65	20.21	20.12	20.66	21.11	19.51	20.07	19.98	20.52	20.97
	8H	20.22	20.74	20.71	21.20	21.67	20.09	20.61	20.57	21.07	21.54
	12H	20.80	21.28	21.29	21.73	22.25	20.68	21.16	21.16	21.61	22.13
8H	4H	18.92	19.44	19.40	19.90	20.37	18.81	19.33	19.29	19.79	20.26
	6H	20.17	20.60	20.68	21.08	21.59	20.05	20.48	20.56	20.96	21.47
	8H	20.94	21.31	21.47	21.83	22.32	20.83	21.19	21.36	21.71	22.21
	12H	21.69	21.98	22.23	22.49	23.01	21.59	21.87	22.13	22.39	22.91
12H	4H	18.98	19.46	19.47	19.91	20.43	18.87	19.36	19.36	19.81	20.32
	6H	20.35	20.71	20.88	21.24	21.73	20.24	20.60	20.77	21.12	21.62
	8H	21.16	21.45	21.70	21.96	22.48	21.05	21.34	21.59	21.86	22.38
Variation with the observer position at spacings:											
S = 1.0H	0.9/-1.0					0.9/-1.0					
S = 1.5H	1.1/-0.8					1.1/-0.8					
S = 2.0H	1.6/-0.7					1.6/-0.7					
Standard tables:	BKBF					BKBF					
Uncorrected UGR	4.6					4.6					

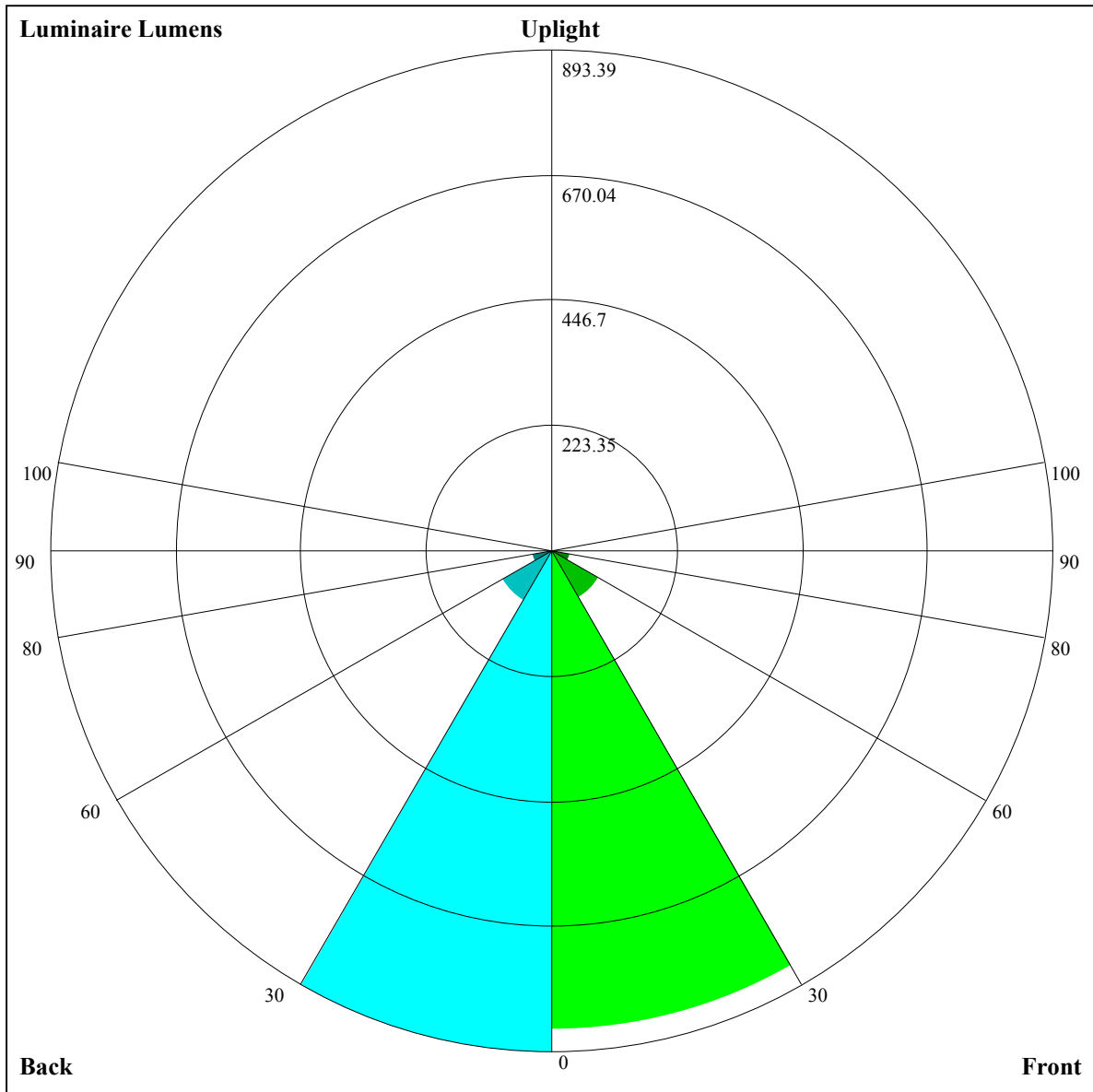
UGR calculation is based on CIE Publ. 117 ,S/H = 0.25



RHOCC	80			70			50			30			10			0
RHOW	50	30	10	50	30	10	50	30	10	50	30	10	50	30	10	0
RCR	COEFFICIENTS OF UTILIZATION RHOF=20 CU															
0	1.14	1.14	1.14	1.11	1.11	1.11	1.06	1.06	1.06	1.02	1.02	1.02	0.97	0.97	0.97	0.95
1	1.06	1.03	1.01	1.04	1.01	0.99	1.00	0.98	0.96	0.96	0.95	0.94	0.93	0.92	0.91	0.89
2	0.99	0.95	0.92	0.97	0.94	0.91	0.94	0.92	0.89	0.91	0.89	0.87	0.89	0.87	0.85	0.84
3	0.93	0.89	0.85	0.92	0.88	0.85	0.90	0.86	0.83	0.87	0.85	0.82	0.85	0.83	0.81	0.79
4	0.89	0.84	0.80	0.87	0.83	0.80	0.85	0.82	0.79	0.84	0.80	0.78	0.82	0.79	0.77	0.76
5	0.84	0.79	0.76	0.83	0.79	0.75	0.82	0.78	0.75	0.80	0.77	0.74	0.79	0.76	0.73	0.72
6	0.80	0.75	0.72	0.80	0.75	0.72	0.78	0.74	0.71	0.77	0.73	0.71	0.76	0.73	0.70	0.69
7	0.77	0.72	0.68	0.76	0.72	0.68	0.75	0.71	0.68	0.74	0.70	0.68	0.73	0.70	0.67	0.66
8	0.74	0.69	0.66	0.73	0.69	0.65	0.72	0.68	0.65	0.71	0.68	0.65	0.71	0.67	0.65	0.63
9	0.71	0.66	0.63	0.70	0.66	0.63	0.70	0.65	0.63	0.69	0.65	0.62	0.68	0.65	0.62	0.61
10	0.68	0.64	0.60	0.68	0.63	0.60	0.67	0.63	0.60	0.66	0.63	0.60	0.66	0.62	0.60	0.59







Luminaire Lumens:

FL=852.89,FM=95.66,FH=34.17,FVH=12.39

BL=893.39,BM=102.58,BH=34.85,BVH=12.55

UL=0,UH=0

BUG Rating:B2-U0-G1

Intensity data(cd)

C/γ(°)	0.0	1.0	2.0	3.0	4.0	5.0	6.0	7.0	8.0
0.0	4841.62	4824.65	4803.59	4766.72	4714.63	4649.67	4551.35	4446.60	4344.18
45.0	4834.60	4838.70	4829.34	4819.97	4783.69	4742.14	4677.18	4615.14	4536.14
90.0	4839.28	4843.97	4820.56	4795.98	4755.01	4701.76	4628.60	4547.26	4457.72
135.0	4835.19	4834.60	4837.53	4822.90	4788.37	4752.67	4705.27	4628.60	4554.28
180.0	4841.62	4841.62	4825.24	4811.19	4785.44	4721.65	4659.62	4598.76	4511.56
225.0	4834.60	4803.59	4773.15	4736.87	4676.59	4601.68	4520.92	4433.72	4328.38
270.0	4839.28	4832.26	4814.70	4780.18	4722.82	4672.49	4600.51	4526.19	4411.48
315.0	4835.19	4815.88	4776.08	4735.11	4663.13	4599.34	4519.17	4392.17	4283.32
360.0	4841.62	4824.65	4803.59	4766.72	4714.63	4649.67	4551.35	4446.60	4344.18
C/γ(°)	9.0	10.0	11.0	12.0	13.0	14.0	15.0	16.0	17.0
0.0	4180.91	4037.53	3880.69	3688.15	3444.69	3229.92	3008.70	2783.39	2500.14
45.0	4404.46	4285.08	4151.06	4000.66	3778.86	3578.71	3365.69	3140.96	2841.91
90.0	4348.28	4179.74	4019.38	3842.65	3648.94	3383.83	3153.25	2871.76	2627.72
135.0	4470.59	4358.81	4210.17	4062.11	3853.77	3661.23	3461.66	3183.68	2955.44
180.0	4396.27	4277.47	4149.89	3964.37	3792.32	3570.52	3368.03	3159.69	2943.74
225.0	4185.59	4042.79	3843.82	3683.46	3499.70	3247.47	3037.38	2819.67	2539.35
270.0	4309.07	4186.76	4045.13	3843.23	3665.32	3475.12	3215.87	3001.68	2788.66
315.0	4155.74	3971.98	3799.92	3612.65	3417.19	3161.44	2948.42	2730.72	2503.07
360.0	4180.91	4037.53	3880.69	3688.15	3444.69	3229.92	3008.70	2783.39	2500.14
C/γ(°)	18.0	19.0	20.0	21.0	22.0	23.0	24.0	25.0	26.0
0.0	2277.17	2058.29	1793.77	1593.63	1126.21	1126.21	1005.77	821.42	689.98
45.0	2612.50	2381.34	2101.02	1882.73	1628.15	1435.03	1250.68	1079.80	884.92
90.0	2400.65	2118.57	1899.11	1691.94	1165.65	1165.65	1081.73	924.42	782.33
135.0	2727.79	2498.97	2230.35	2009.14	1798.45	1595.97	1354.27	1177.53	1010.16
180.0	2668.68	2439.86	2212.21	1999.77	1739.93	1551.49	1363.63	1148.86	989.09
225.0	2317.55	2101.60	1893.26	1638.69	1144.76	1144.76	1104.14	952.22	778.58
270.0	2510.09	2283.02	2007.38	1797.28	1603.58	1419.23	1202.70	1042.93	890.77
315.0	2226.84	2010.31	1755.15	1556.76	1156.23	1156.23	999.97	855.42	724.33
360.0	2277.17	2058.29	1793.77	1593.63	1126.21	1126.21	1005.77	821.42	689.98
C/γ(°)	27.0	28.0	29.0	30.0	31.0	32.0	33.0	34.0	35.0
0.0	570.18	464.90	361.08	294.25	239.06	194.65	152.69	128.87	112.13
45.0	740.95	611.62	502.18	389.82	317.25	301.45	233.39	162.17	136.53
90.0	622.04	511.19	418.79	324.10	265.40	218.00	172.06	144.67	124.13
135.0	822.88	688.87	571.24	450.10	368.17	301.45	301.45	192.60	161.35
180.0	846.29	683.02	564.22	461.22	360.56	295.01	295.01	180.25	152.57
225.0	651.47	536.07	414.81	335.86	257.67	207.64	170.53	137.29	118.16
270.0	747.39	599.91	494.57	402.11	328.37	296.77	296.77	165.38	133.61
315.0	578.85	477.08	391.34	319.24	247.61	202.60	167.55	140.40	115.52
360.0	570.18	464.90	361.08	294.25	239.06	194.65	152.69	128.87	112.13
C/γ(°)	36.0	37.0	38.0	39.0	40.0	41.0	42.0	43.0	44.0
0.0	99.90	88.49	81.70	75.14	71.22	68.35	65.49	63.73	62.62
45.0	118.27	100.78	90.53	82.63	75.49	71.16	67.18	64.67	62.56
90.0	106.10	95.51	87.14	79.24	74.62	70.58	67.65	64.55	62.56
135.0	137.47	115.64	103.29	93.75	86.38	79.77	75.55	72.10	68.82
180.0	127.58	111.66	96.33	87.14	80.47	74.85	69.47	66.36	63.85
225.0	103.76	92.52	82.22	76.08	71.28	67.53	64.02	61.68	59.58
270.0	113.77	98.61	88.43	81.05	75.20	69.47	66.36	63.50	61.45
315.0	101.36	90.94	81.64	76.20	70.75	67.36	64.73	62.62	60.10
360.0	99.90	88.49	81.70	75.14	71.22	68.35	65.49	63.73	62.62

Intensity data(cd)

C/γ(°)	45.0	46.0	47.0	48.0	49.0	50.0	51.0	52.0	53.0
0.0	61.74	61.16	60.86	60.40	59.93	58.87	57.29	55.54	53.37
45.0	60.92	59.34	58.76	58.41	58.58	58.93	59.17	58.82	57.76
90.0	60.92	59.81	58.64	58.05	57.06	56.30	55.36	53.84	52.38
135.0	66.89	65.31	63.85	62.97	61.86	60.28	59.22	58.35	57.12
180.0	61.45	60.04	58.76	58.11	57.88	57.82	58.35	58.23	57.70
225.0	58.35	57.59	57.41	57.94	58.87	59.46	59.46	58.00	55.25
270.0	59.22	58.05	57.06	56.24	55.83	55.48	54.95	54.02	52.49
315.0	58.82	57.82	57.06	56.18	55.54	55.07	54.02	53.08	51.97
360.0	61.74	61.16	60.86	60.40	59.93	58.87	57.29	55.54	53.37
C/γ(°)	54.0	55.0	56.0	57.0	58.0	59.0	60.0	61.0	62.0
0.0	51.91	50.62	49.22	48.11	46.94	45.59	44.54	43.48	42.43
45.0	55.30	53.20	51.21	49.74	48.46	46.82	45.59	44.24	43.07
90.0	51.15	49.63	47.93	46.58	45.30	44.01	42.55	41.32	40.26
135.0	55.65	54.19	52.73	51.15	49.33	48.40	47.52	46.41	45.41
180.0	56.36	53.90	52.09	50.45	49.16	47.58	46.35	44.95	43.83
225.0	52.90	50.62	49.22	47.93	46.53	45.35	44.24	42.78	41.73
270.0	50.45	49.16	47.87	46.58	45.12	44.07	42.96	41.90	40.56
315.0	50.68	49.57	48.22	47.23	46.17	45.06	43.77	42.60	41.49
360.0	51.91	50.62	49.22	48.11	46.94	45.59	44.54	43.48	42.43
C/γ(°)	63.0	64.0	65.0	66.0	67.0	68.0	69.0	70.0	71.0
0.0	41.08	40.15	39.03	37.98	36.75	35.76	34.59	33.65	32.77
45.0	41.55	40.38	39.21	38.16	36.69	35.70	34.70	33.42	32.48
90.0	38.98	37.98	36.99	35.76	34.82	33.94	32.89	32.13	31.31
135.0	44.24	43.25	42.25	40.85	39.91	38.80	37.75	36.34	35.11
180.0	42.66	41.20	40.09	38.98	37.92	36.64	35.64	34.70	33.53
225.0	40.50	39.50	38.10	37.04	36.05	34.70	33.65	32.71	31.54
270.0	39.50	38.51	37.16	36.17	35.11	33.94	33.07	32.01	31.08
315.0	40.09	38.98	37.86	36.75	35.64	34.35	33.30	32.13	31.19
360.0	41.08	40.15	39.03	37.98	36.75	35.76	34.59	33.65	32.77
C/γ(°)	72.0	73.0	74.0	75.0	76.0	77.0	78.0	79.0	80.0
0.0	31.54	30.78	30.20	29.50	28.91	28.32	27.74	27.10	26.51
45.0	31.49	30.31	29.61	28.97	28.38	27.97	27.45	26.86	26.45
90.0	30.37	29.73	29.09	28.50	27.97	27.33	26.86	26.34	25.75
135.0	33.83	32.54	31.02	30.14	29.26	28.44	27.92	27.21	26.69
180.0	32.60	31.72	30.84	29.96	29.38	28.79	28.15	27.51	26.92
225.0	30.61	29.79	29.09	28.50	27.92	27.27	26.74	26.28	25.87
270.0	30.31	29.55	28.73	28.15	27.56	27.10	26.45	25.98	25.52
315.0	30.31	29.44	28.85	28.27	27.68	27.10	26.63	26.16	25.75
360.0	31.54	30.78	30.20	29.50	28.91	28.32	27.74	27.10	26.51
C/γ(°)	81.0	82.0	83.0	84.0	85.0	86.0	87.0	88.0	89.0
0.0	26.10	25.81	25.28	24.64	23.70	22.71	21.59	20.31	18.67
45.0	25.98	25.69	25.34	24.76	24.05	23.12	22.12	20.66	19.25
90.0	25.46	25.28	24.99	24.35	23.35	22.47	21.30	20.01	18.26
135.0	26.28	25.98	25.81	25.81	25.11	24.05	23.17	22.00	20.60
180.0	26.34	25.87	25.46	25.16	24.40	23.23	22.18	20.95	19.61
225.0	25.46	24.99	24.70	23.94	22.82	21.89	20.78	19.25	17.85
270.0	25.11	24.87	24.70	24.17	23.47	22.36	21.36	20.07	18.61
315.0	25.46	24.99	24.40	23.76	22.71	21.59	20.31	19.02	17.50
360.0	26.10	25.81	25.28	24.64	23.70	22.71	21.59	20.31	18.67

Intensity data(cd)

<b>C/γ(°)</b>	<b>90.0</b>
<b>0.0</b>	<b>17.50</b>
<b>45.0</b>	<b>17.73</b>
<b>90.0</b>	<b>17.15</b>
<b>135.0</b>	<b>19.14</b>
<b>180.0</b>	<b>17.91</b>
<b>225.0</b>	<b>16.68</b>
<b>270.0</b>	<b>17.09</b>
<b>315.0</b>	<b>16.50</b>
<b>360.0</b>	<b>17.50</b>